



**2015-2016 Focus ST
6-Pack Diffuser Fins
Installation Guide**



6-Pack Diffuser Fin Installation

Do not install with the adhesive until you have read through this entire installation guide and understand the placement of the fins and the “SWEET SPOT” of each fin.

Clean the bottom of the bumper first, with the supplied alcohol wipes.

6-Pack Diffuser Fin Installation

The fins are numbered as the following:
1 through 6, see below.





Fin 3 and 4 Installation

Fins 3 and 4 should be installed first. Place the fin next to the screw that is closest to the exhaust, the fin goes on the EXHAUST side of the screw. **KEEP THE FIN VERTICAL AND STRAIGHT, MOVE THE FIN LEFT OR RIGHT IN SMALL INCREMENTS UNTIL YOU FIND THE SWEET SPOT.**

There should be NO GAP between fin and bumper

Fin 3 and 4 example picture



It is best to line the fin up using a friend standing behind you who can clearly see by eye if the fin is straight. Once you are confident in the position, use an erasable marker or piece of tape to mark the spot of the fin. Remove the adhesive backing and carefully apply the fin with a friend guiding you from afar.

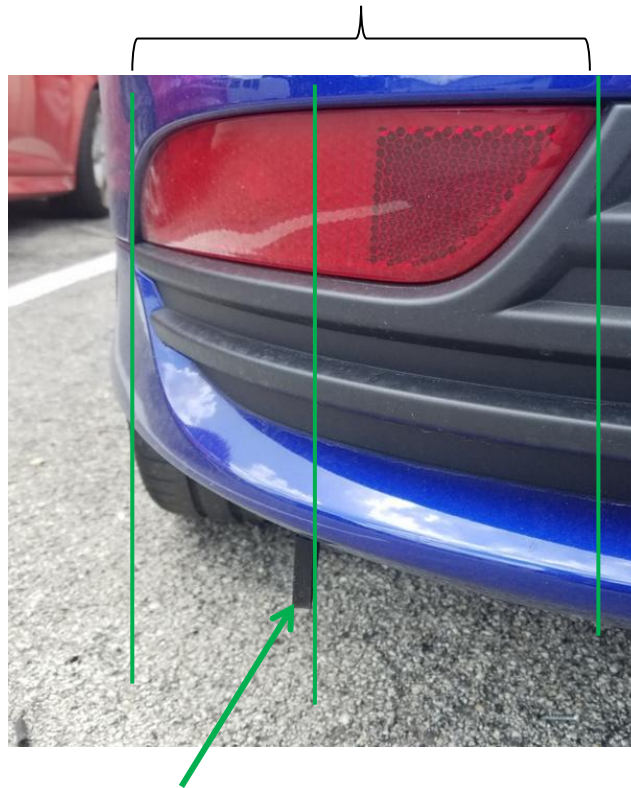


Fin 1 and 6 Installation

The next set of fins are 1 and 6. You mustn't install fins 2 and 5 yet since the placement of those depends on the placement of 1, 3, 4, and 6 for your particular bumper.

Using this rear reflector, approximately $\frac{1}{2}$ of the way towards the outside of the car from where the reflector begins, drop a line vertically downward and that is the placement of Fin 1 (and 6).

FIND THE SWEET SPOT, there should be no gap.



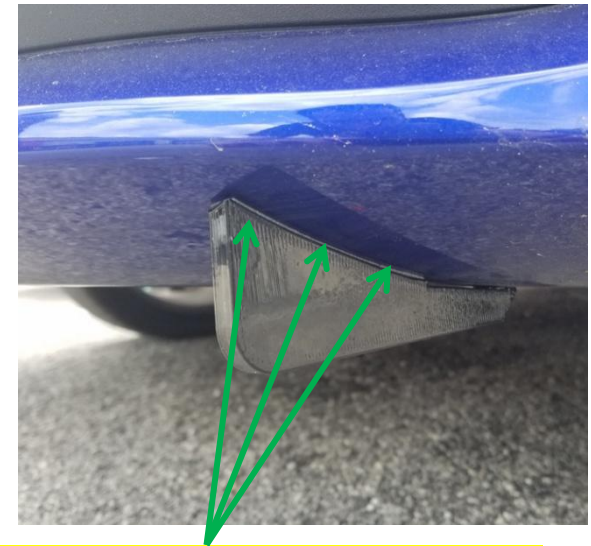
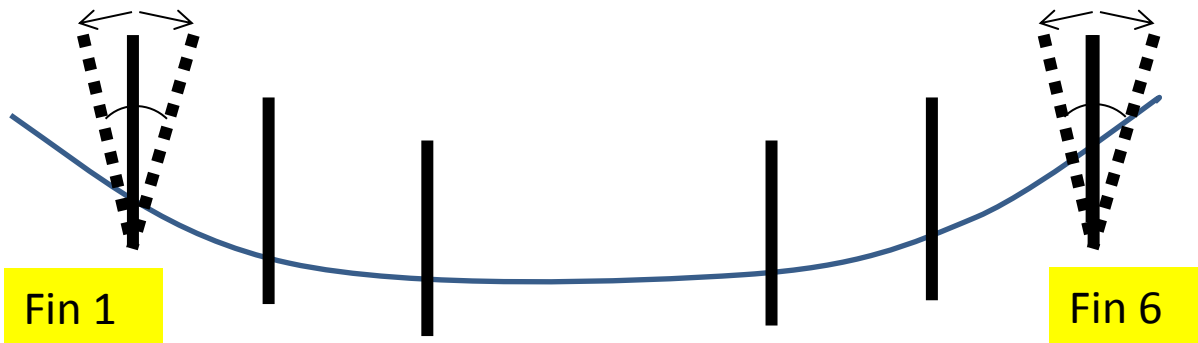
Reflector location as reference shown, fin 1 shown

It is best to line the fin up using a friend standing behind you who can clearly see by eye if the fin is straight. Once you are confident in the position, use an erasable marker or piece of tape to mark the spot of the fin. Remove the adhesive backing and carefully apply the fin with a friend guiding you from afar.

Tweak or Pivot Fins 1 and 6

There may be a need to perform this small motion during installation

Looking at your bumper from the top down, the outermost fins (1 and 6) may require a 2-3 degree pivot in either the left or right direction (once you have located the closest contour match, see previous page). **This so the gap between the 3M tape, and bumper, is completely gone.**

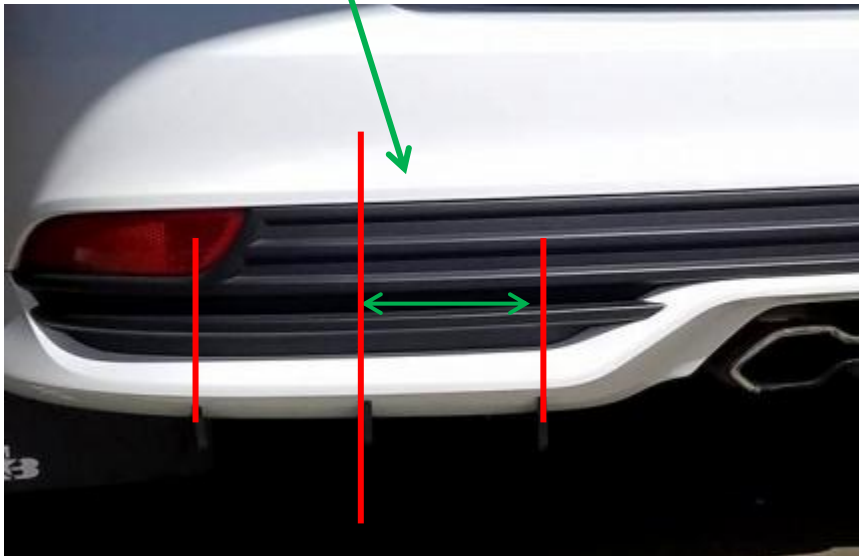


Example of fin 6 shown, no gap.

Fin 2 and 5 Installation

REMEMBER TO FIND THE SWEET SPOT FOR EACH FIN BY USING THIS GUIDE AS A REFERENCE AND MOVING THE FIN Laterally LEFT OR RIGHT UNTIL YOU SEE NO GAP.

Fins 2 and 5 will fit approximately in between their respective neighboring fins.



It is best to line the fin up using a friend standing behind you who can clearly see by eye if the fin is straight. Once you are confident in the position, use an erasable marker or piece of tape to mark the spot of the fin. Remove the adhesive backing and carefully apply the fin with a friend guiding you from afar.



Finalization

When you feel that you have found the sweet spot locations for the fins, remove the tape protector and hook the fin behind the bumper at the location, and **FIRMLY PRESS THE FIN ADHESIVE** up against the bumper. Do not remove once installed. ENJOY YOUR NEW LOOK!

